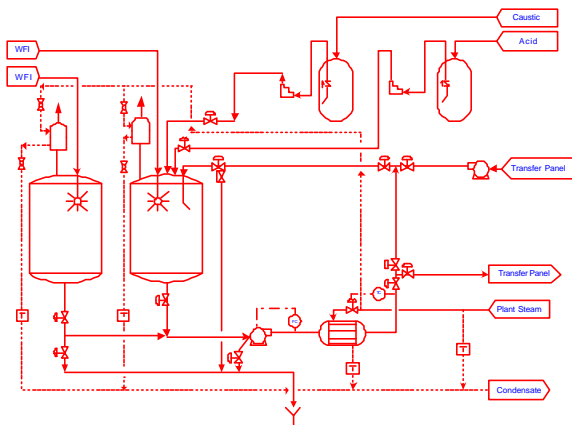
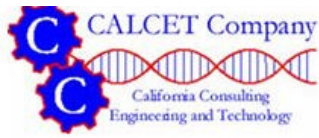


# IT CAPABILITIES BROCHURE



- ▼ BUSINESS PROCESS RE-ENGINEERING
- ▼ DOCUMENT AND CONTENT MANAGEMENT SOLUTIONS
- ▼ BUSINESS WORKFLOW
- ▼ CLIENT/SERVER PROGRAMMING
- ▼ DATABASE ADMINISTRATION





# IT CAPABILITIES

## INTRODUCTION

## OUR MISSION

1. BUSINESS PROCESS REENGINEERING
2. DOCUMENT AND CONTENT MANAGEMENT SOLUTIONS
3. BUSINESS WORKFLOW
4. CLIENT/SERVER PROGRAMMING
5. DATABASE ADMINISTRATION

## PROJECT EXPERIENCE

1. BUSINESS PROCESS REENGINEERING
  - 1.1 Levi Strauss & Co.
  - 1.2 Stanford Hospital and University
  - 1.3 Bechtel Corporation
  - 1.4 Household Financial Group
  - 1.5 Delta Dental of California
  - 1.6 Deutsche Post
  - 1.7 Citibank
2. DOCUMENT AND CONTENT MANAGEMENT SOLUTIONS
  - 2.1 Levi Strauss & Co.
  - 2.2 Stanford Hospital and University
  - 2.3 Bechtel Corporation
  - 2.4 Delta Dental of California
  - 2.5 Deutsche Post
  - 2.6 Citibank
3. BUSINESS WORKFLOW
  - 3.1 Levi Strauss & Co.
  - 3.2 Stanford Hospital and University
  - 3.3 Bechtel Corporation
  - 3.4 Delta Dental of California
4. CLIENT/SERVER PROGRAMMING
  - 4.1 Levi Strauss & Co.
  - 4.2 Stanford Hospital and University
  - 4.3 Bechtel Corporation
  - 4.4 Delta Dental of California
5. DATABASE ADMINISTRATION
  - 5.1 Levi Strauss & Co.
  - 5.2 Stanford Hospital and University
  - 5.3 Bechtel Corporation
  - 5.4 Delta Dental of California

## IT CAPABILITIES

### RESUMES



**Resumes will be provided upon request**